

Khazzan – Central Processing Facility Project, Oman

INMAR for safe transport of
key infrastructure and utility material
for **Khazzan – CPF.**

Module Weight: **8256 FRT**

Route: Masan, **S. KOREA.** To Duqm, **OMAN.**

Scope & Expertise: **Safe loading, sea fastening, and
transportation**

Vessels : Heavy lift m/v **Heino**



Khazzan – Central Processing Facility Project, Oman

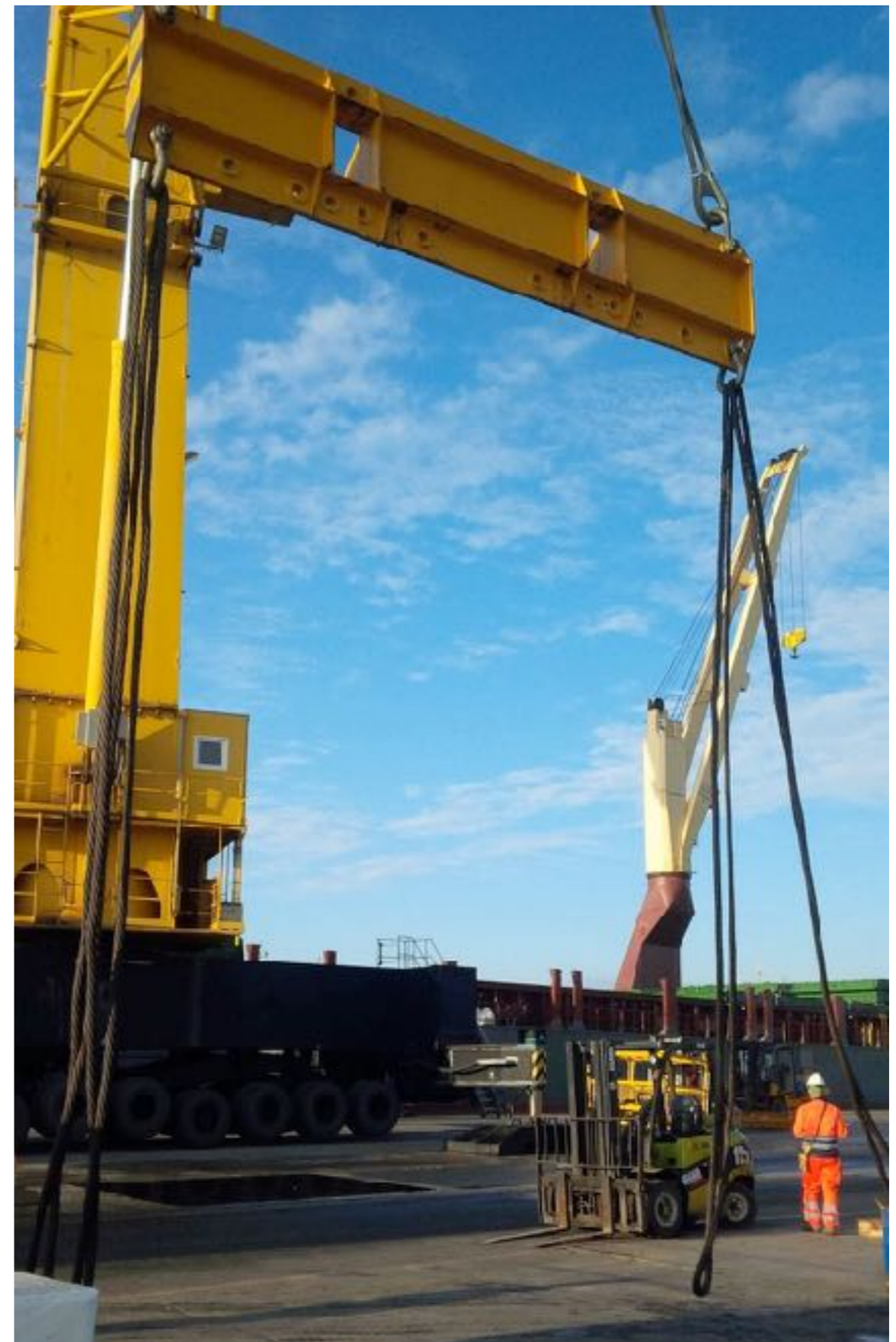
The Khazzan gas field is a significant strategic asset for BP. It is one of the largest upstream projects ever undertaken in the Sultanate of Oman.

The Engineering Procurement Construction and Commissioning – EPCC contract was awarded to a well established firm as a contract for Phase 1 of the field’s Central Processing Facility – CPF.

INMAR was approached to transport condensate processing system, power generation plant, water treatment system and all associated utilities and infrastructure, which were transported from other continents to Oman.

Cargo

- Gas suction scrubber
- Dry gas scrubber
- Expander suction scrubber
- Gas mercury removal bed
- Condensate Product Cooler
- Steel structures
- Driving units for the project





Challenges

A key challenge for INMAR was the tight timescales.

The length and weights of each of the cargo to be transported was the added complexity.

Khazzan – Central Processing Facility Project, Oman

Solution

The Khazzan project was a challenge which allowed us to come up with pioneering solutions – a process we enjoy most at Inmar. **m/v Heino** – was booked to transport the project cargo from Masan, S. Korea to Duqm, Oman. The length and weights of the cargo meant – smart, accurate logistical, operational planning and engineering were required for the execution.

Team Inmar successfully managed the safe loading, sea fastening, and transportation of the cargoes.

After sea fastening the scrubbers onboard, the vessel set sail to Oman to set the project in motion, where she discharged the cargo safely onto the quayside. We at Inmar managed the shipping process from A-Z, ensuring safe delivery. **The success of the team of the project was the execution within scope, time and budget.**

